

## Coantec C68 series High Performance Multifunctional Industrial Videoscope

- 8-inch IPS industrial wide-view HD LCD touch screen
- 1,000,000 pixel HD industrial camera
- Electric joystick + touch screen virtual joystick
- Knob type multifunction key
- 180° Rotatable stand, can be hanged and be supported
- VGA/HDMI same screen output
- Built in wireless Bluetooth, 4G and WiFi modules
- 3.5mm Audio interface output (optional)



- Remote control module (optional)
- Expandable large storage space
- Picture editing function
- 4 corners TPU rubber coated anti-collision
- 3D measurement function (premium version)
- Super long service time of power supply

### SHENZHEN COANTEC AUTOMATION TECHNOLOGY CO.,LTD.

No.3, Crosslane 3, Yuanhu Road, Zhangbei,Ailian,Longgang District, Shenzhen, China,518172  
Tel : +86 -755- 8972 8626 Fax : +86 -755- 8978 6196  
E-mail : zyd@chinavideoscope.com Web : www.chinavideoscope.com



YouTube



Facebook



Coantec Website

## Brief Introduction

The C68 series is a brand new high-performance industrial videoscope, which independently researched and developed by Coantec. Through the combination of electronic joystick and virtual joystick on the touch screen, this instrument provides better controllability, flexibility and comfort. This instrument allows observation of areas that are difficult to be observed directly through the human eyes, and provides better guarantee for product quality and instrument operation security. This product is applicable to fields such as aeronautics, astronautics, energy, electric power, chemistry, machinery, car, military industry, special inspection, etc.



**C68**

Real view of detection engine

# Super High Performance

## 8-inch IPS industrial wide-view HD LCD touch screen

Effectively restore real colors and present more vivid images. Larger visual angle, good image quality in all directions, effectively reduce visual fatigue and improve observation comfort. The touch screen is sensitive and easy to operate, which greatly improves the work efficiency.



8-inch display



Color HD display



Wide-view perspective



Sensitive touch screen

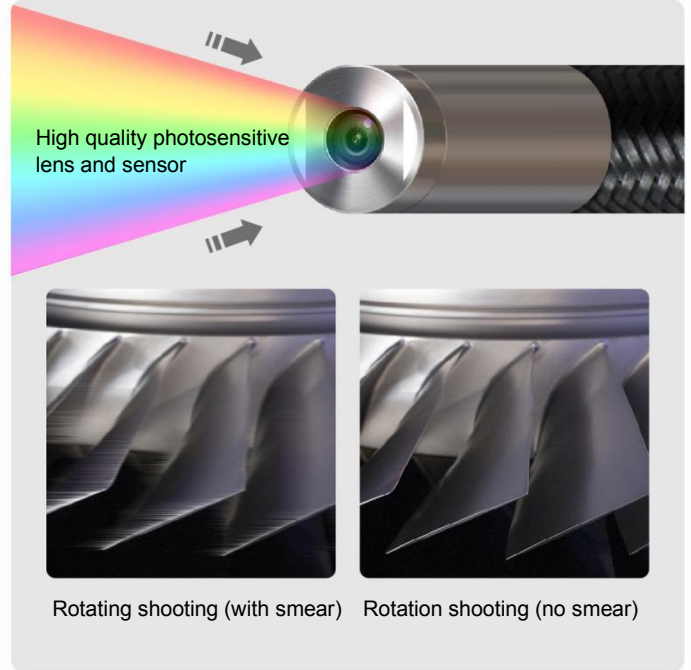
## Electric joystick + touch screen virtual joystick

The electric joystick is matched with the touch screen virtual joystick to control the probe move accurately, providing a better control experience. Turn on the probe coordinate display function to observe the current bending angle of the probe in real-time. Users can also configure mechanical joystick as required.



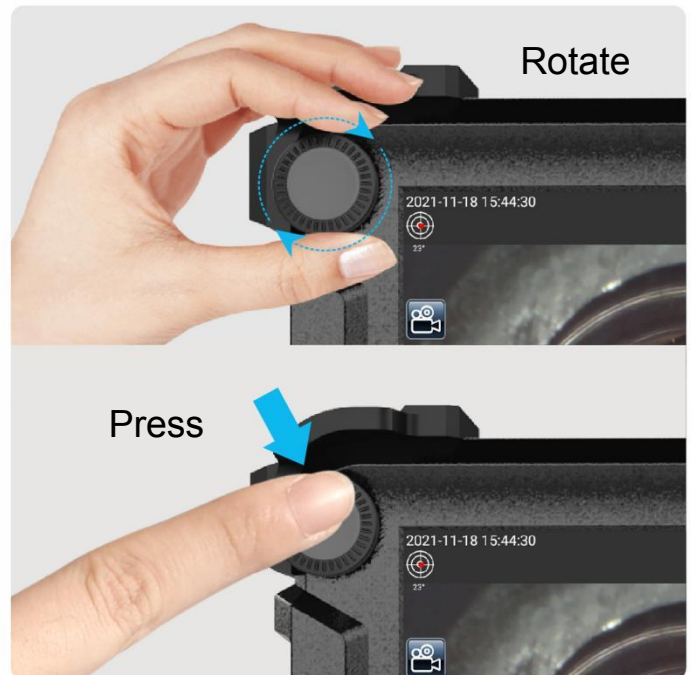
## 1,000,000 pixel HD industrial camera

With built-in high-quality image sensor, the image quality is clearer and more delicate, showing rich details, the video image is smoother, and the picture has no delay and drag, which is convenient for rapid and accurate identification of subtle defects.



## Knob type multifunction key

The unique design of knob type multifunctional key (patented) makes it easier to switch and set menu functions.



# Super High Performance

## 180° Rotatable stand

Equipped with 180 ° rotatable stand, it can be suspended and supported, which is convenient to adjust the observation angle, and is suitable for various detection scenes.



## VGA/HDMI Same screen output

The external display screen can be connected through VGA interface (optional) or HDMI interface (standard), which is convenient for multi person consultation and more conducive to accurate judgment of on-site conditions.



## 3.5mm Audio interface output (optional)

Earphones are connected externally through the audio interface to monitor the sound while observing the image.



## Built in wireless Bluetooth, 4G and WiFi modules

Built in wireless Bluetooth module to transfer pictures or video files more conveniently and quickly. Built in 4G and WiFi modules can upload and download data through wireless networking.



## Super High Performance

### Remote control module (optional)

The expandable remote control module controls the host through the terminal to facilitate the effective transmission of information and remote and efficient cooperation.



### Expandable large storage space

The host memory is 2GB, and the standard storage space is 16GB, which can be expanded to 64GB, with larger storage space and faster access speed. Equipped with 2-way USB interface, data can be stored through external USB disk.



### Four corners TPU rubber coated anti-collision design

The four corners of the host adopt TPU rubber coated anti-collision design, with round and beautiful appearance, more shock and fall resistance, effectively strengthening the protection of the equipment, and more durable.



### 3D measurement function (premium version)

The binocular stereo imaging measurement system can measure the distance from point to point, point to line and point to surface (depth), as well as the length of multi line segments and the area of closed graphics. The measurement accuracy can reach 0.01mm and the error is  $\leq 5\%$



## Super High Performance

### Picture editing function

Text and graphic notes can be added to the picture, such as full screen text mark, graffiti overlay, handwritten lines, arrows, boxes, circular signs, text notes, etc



### Super long service time

The replaceable high-capacity rechargeable lithium battery and charger are adopted to ensure the long-term service time.



## Technical Specification

| Host System                    |  |
|--------------------------------|--|
| Instrument Type                | C68 series high-performance industrial videoscope  |
| Display Screen                 | 8 inches IPS industrial wide-view HD LCD touch screen  |
| Monitor Resolution             | 1024*768   |
| User Interface                 | Navigation menu of the touch screen and physical buttons   |
| Image Display                  | Supports real-time 5x magnification and Full Screen Display/Center Display mode                                  |
| LED Brightness Level           | High and low brightness modes, each adjustable with 5 brightness levels  |
| Function Modes                 | Original Color mode, Black-And-White mode, Negative mode, High Color Density mode, Close-up mode and Remote mode |
| Brightness of Screen Backlight | Adjustable   |
| Image Recording                | Equipped with photography and videography functions; supports image capture during video recording               |
| Freeze Screen (Stop Motion)    | Supported  |
| Watermark Setting              | Supports time/image/directory watermark  |
| Image Zoom                     | Supports image zooming through Pinch Gesture   |
| File Format                    | Image JPEG/BMP, video mp4  |
| Image Rotation                 | Rotation of 0°, 90°, 180°, 270°  |

|                                 |   |                    |
|---------------------------------|---|--------------------|
| File Management                 | Able to review videos and images in full screen, and execute Delete/Rename/View Details operations  |                    |
| Image Preview                   | List  |                    |
| Flash Exposure Function         | Adjustable flash exposure brightness level (Level 0~5) and latency time (0S-16S)  |                    |
| Annotation                      | Handwritten lines, arrows, boxes, circle labels, text annotations   |                    |
| RAM                             | 2GB   |                    |
| Medium of Memory Storage        | Standard memory space 16GB which can be expanded to 32GB or 64GB and can be connected with external USB flash disk  |                    |
| Cross-ruler                     | Supported   |                    |
|                                 | Mechanical control  | Electronic control |
| Probe Coordinates Display       | /   | Supported          |
| Probe Angle Bend Display        | /   | Supported          |
| Virtual Joystick Control        | /   | Supported          |
| Export of Internal Storage Data | Supported   |                    |
| Bluetooth Connectivity          | Standard  |                    |
| WiFi Module                     | Standard  |                    |
| Cable Interface                 | Optional  |                    |
| 4G Module                       | Optional  |                    |
| 3D Measurement Function         | Premium   |                    |
| Languages and Input Methods     | More than ten languages such as Simplified Chinese, Traditional Chinese, English, Japanese, Korean, French, German, Portuguese, Spanish, Russian, Italian, Dutch. Input methods can be downloaded upon activation of WiFi |                    |
| Video Output                    | VGA (optional)/HDMI (standard) port   |                    |
| Audio Output                    | 3.5mm headphone jack (standard)   |                    |
| System Security Protection      | Password protection   |                    |
| External Dimension              | 245mm×195mm×95mm  |                    |
| Gross Weight                    | 2.85kg (including batteries)  |                    |
| Weight of the Handle            | 1.1kg   |                    |

| Insertion Tube System            | Standard Version   |                         |           |           |           |           | Premium Version (Measurement Insertion Tube) |                         |
|----------------------------------|--|-------------------------|-----------|-----------|-----------|-----------|--|-------------------------|
|                                  | Φ2   | Φ2.8                    | Φ3.9      | Φ4.8      | Φ6        | Φ8        | Φ4   | Φ6                      |
| Probe Diameter (error ±0.1mm)    | Φ2   | Φ2.8                    | Φ3.9      | Φ4.8      | Φ6        | Φ8        | Φ4   | Φ6                      |
| Camera Pixels                    | 160,000  | 160,000                 | 1,000,000 | 1,000,000 | 1,000,000 | 1,000,000 | 1,000,000                                    | 1,000,000               |
| View Direction                   | Forward View   | Forward view /side view |           |           |           |           | Forward view                                 | Forward view /side view |
| Depth of View                    | 5-50mm   | 5-50mm                  | 5-100mm   | 8-80mm    | 8-80mm    | 8-80mm    | 5-100mm                                      | 8-80mm                  |
| View Angle                       | 120°   | 120°/70°                | 120°/70°  | 120°/70°  | 120°/70°  | 120°/70°  | 80°  | 100°                    |
| Working Length of Insertion Tube | 1-1.5m   | 1-3m                    | 1-3m      | 1-3m      | 1-10m     | 1-10m     | 1-3m   | 1-7m                    |
| Lighting Mode                    | Front LED/Rear-mounted LED, fiber light guide (optional) |                         |           |           |           |           | Rear-mounted LED, fiber light guide          |                         |

|                                      |   |  |
|--------------------------------------|---|--|
| Angle of Probe Bend in One Direction | ≥150°                                     |  |
| Measuring Function                   | Without                                   | Supports point-to-point, point-to-line, point-to-surface, multi-segment and multi-zone measuring |
| Precision of Measurement             | /   | 0.01mm   |
| Error of Margin in Measurements      | /   | 5%   |
| Probe Steering Ability               | 360°all-way articulation                  |  |
| Material of Insertion Tube           | Wear-resistant tungsten wire braided tube |  |
| Steering Control                     | Electronic control/mechanical control     |  |
|                                      | Mechanical control                        | Electronic control   |
| Probe Lock                           | /   | Supported  |
| Probe Reset                          | /   | Supported  |
| Stepping Function                    | /   | Supported  |
| Speed Regulation                     | /   | Supported (Speed of the probe's movement can be controlled in Lock Position Step mode.)          |
| Compatibility                        | The insertion tube is replaceable         |  |
| Waterproof Rating of the Probe       | IP67                                      |  |

| <b>Operating Environment</b>    |            |
|---------------------------------|------------|
| Operating Temperature of System | -20°C-50°C |
| Operating Temperature of Probe  | -20°C-60°C |
| Storage Temperature             | -40°C-60°C |
| Relative Humidity               | 15%-90%    |

| <b>Power Supply Parameters</b> |  |
|--------------------------------|--|
| Power Supply                   | INPUT:220±10%V 50Hz mains supply, OUTPUT:DC15V   |
| Battery Capacity               | 7.4V, 10000mAh   |
| Operating Time                 | For electric joystick: ≥4 hours; for mechanical joystick: ≥6 hours   |
| Standard Configuration         | 1 instrument case, 1 host machine, 1 insertion tube, 32G USB flash disk, 2 rechargeable lithium battery packs, 1 power adapter, 1 desktop charger, 1 HDMI cable, 1 host cable, 1 user manual |

| <b>Customized Service</b>   |  |
|---|--|
| 1. The length, diameter and lighting method of the insertion tube can be customized according to the customer's requirements. |  |
| 2. Scale can be added on the insertion tube.  |  |
| 3. Software functions are customizable.   |  |
| 4. The lens are customizable.   |  |