

UX20

Easier and faster X-ray and CT inspection of cast parts.

- Intuitive operation with Gemini
- Benchmark image quality
- Fast results in 2D and 3D
- Compact footprint
- Robust design



inspect
award 2021
winner

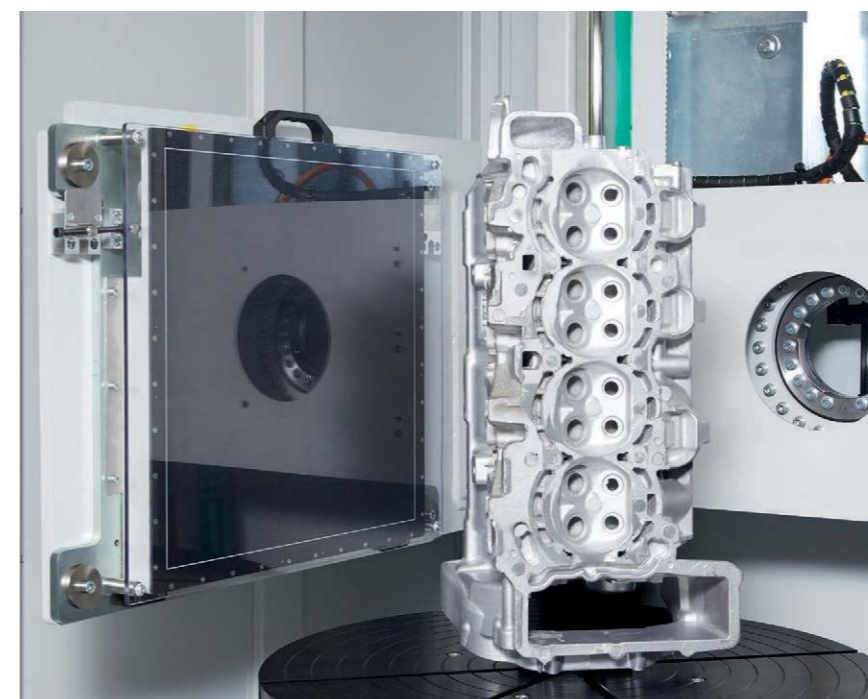
LEAP
AWARDS
Winner

YXLON

We see you.

Looking beyond the surface is our core competency at Yxlon – but not only in a technical way.

Zooming in on your industry, applications and business challenges allows us to develop innovative and relevant solutions that help you shape future markets. Faster time to market? Avoiding production downtimes? The perfect image with the highest resolution, as fast and easy as possible? Whatever your goal – let's talk about it!



UX20 compact inspection system with large inspection envelope for 2D and 3D results in record time.

Yxlon – part of the Comet Group.

The Comet Group is a globally leading technology company with a focus on plasma control and X-ray technology. Headquartered in Flamatt, Switzerland, we employ more than 1,500 people worldwide. Collaborative, customer-centric product development is the driving force behind our solutions.

**Led by experience.
Driven by curiosity.**

Best image quality. Fast and easy.

Due to the transformation to electric mobility, foundries are increasingly producing larger and more complex components. More than ever, efficient processes are crucial.

Which parts can be inspected with the UX20?

Automotive and aerospace castings

Welded structures

Multi-material components

Additive manufactured parts

Special alloys

Plastics

Ceramics

Which applications is it designed for?

Quality assurance and material analyses

Failure analyses e.g. flaws, porosities, cracks, inclusions

Assembly checking

Measurements of inner structures

Inspection of small serial productions

Process control

With the UX20, Yxlon offers a standard system that facilitates fast and highly efficient inspections thanks to easy, intuitive operation. Its exceptional inspection envelope allows for 2D and 3D results in record time.

Intuitive user interface

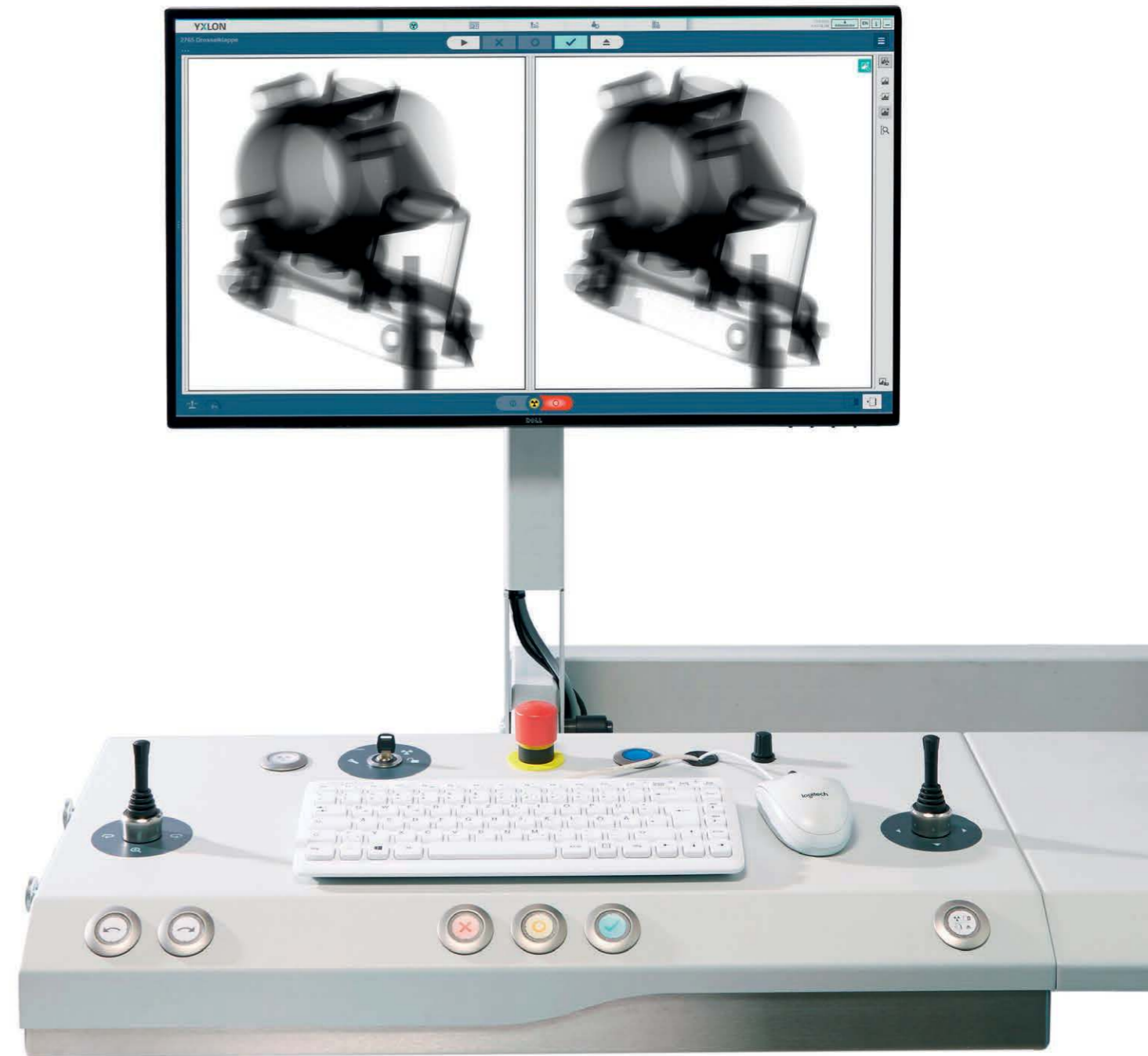
Making professional 2D and 3D inspections as intuitive as possible, even for occasional operators, is the aim of our award-winning Gemini user interface. Automation, wizards and presets guide the user, leading to more efficient workflows.

Benchmark image quality

The optimized image chain of the UX20 enables any operator to make consistent inspection decisions. It combines X-ray tube, detector and image processing for reliable benchmark image quality.

Maintenance made simple

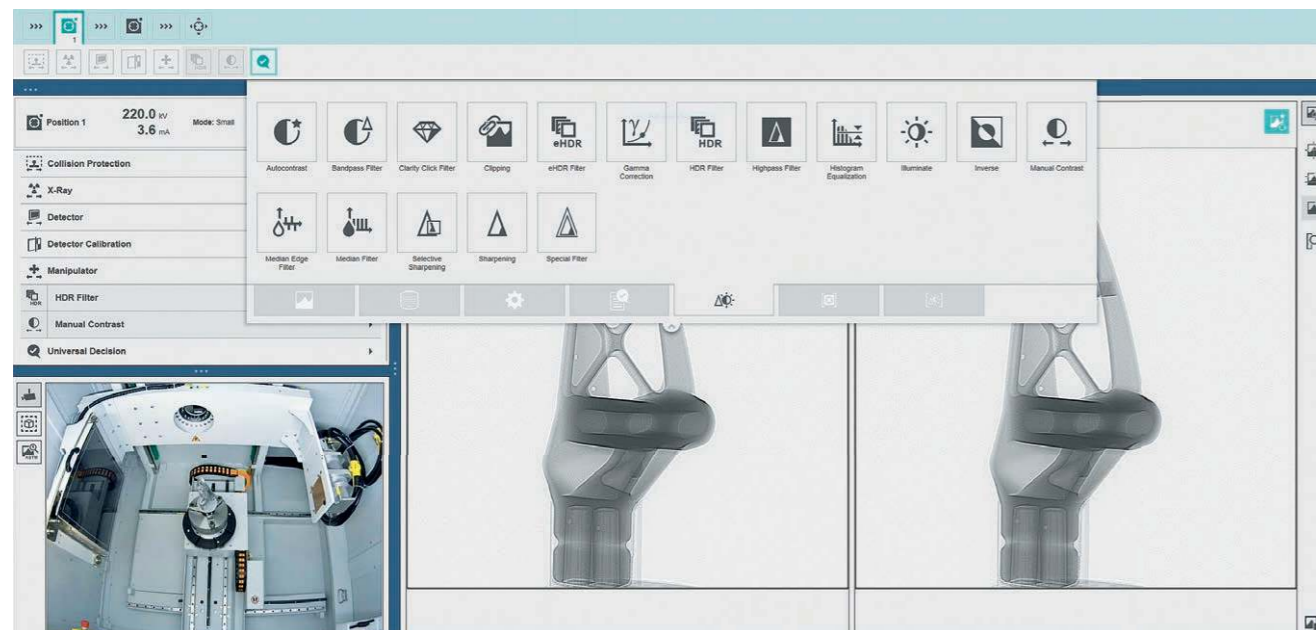
Accessibility from two sides makes maintenance of the UX20 hassle-free. To prevent damage from the rough environment and to improve uptime, the extendable cooler unit and the generator are safely stored inside.



Accessible, ergonomic design. No distractions: The clean layout of the operator desk allows operators to stay focused on the inspection task. The height of the desk can be adjusted, facilitating operation from a sitting or standing position.

Geminy.

One user interface for all tasks.



No wonder that Geminy won an award for excellence in human-machine-interface design: Yxlon's smart software helps users get inspections done as easily as possible.

From the daily operator working with presets and predefined workflows to the expert who puts these in place: As the single user interface for all workflows, Geminy accommodates users with different levels of expertise.

Easy to use, powerful performance

Based on customer input, we designed the UX20 system for fast and easy X-ray inspection, be it manual or automatic. SmartGuard, a Geminy software wizard, helps to safely generate highly detailed images without the risk of collision. Users can rely on decades of 2D X-ray experience with a toolbox of 2D live image enhancement filters.

Keeping track with part ID and part type

Thanks to track & trace capabilities the ID/serial number of parts can be added to the inspection data and reports manually or via barcode scanner.

Simple sharing: Automated Data Transfer

Save time and effort in providing 2D and 3D inspection data like images and reports where needed. Automated Data Transfer stores data accessibly on a server outside the system.

At a glance: System performance

Operators can quickly analyze the system's condition with one look at the Healthmonitor. In addition, performance checks can be executed easily with our automatic workflows.



Side mirror X-ray image with optimized settings for manual 2D inspection.



Geminy's Healthmonitor shows the current system condition.

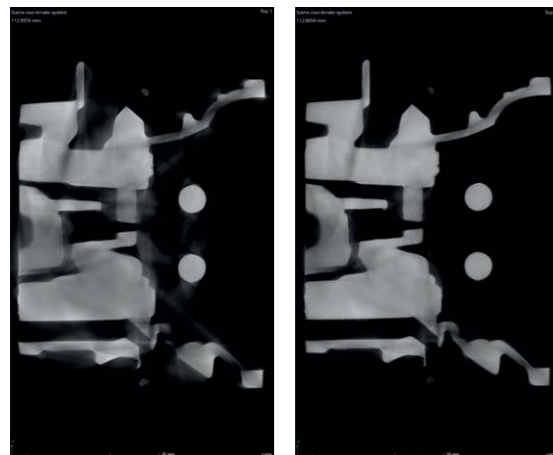
Clever additions to smart systems.

Computed tomography

With the heritage of CT inspection systems like the FF35 CT, you can count on a strong suite of computed tomography features. With ScanExtend, the wizard guides you to set up various scan-field extensions to scan even the largest parts in the system. With FlexCenter, difficult parts or regions of interest can be set up quickly, enabling you to get your task done in minimum time.

Optimized surface determination with ScatterFix 2.0

The innovative ScatterFix 2.0 functionality developed by Yxlon reduces parasitic scattered radiation and thus improves the quality of the CT data. This effect is an essential advantage, e.g. for an optimized surface determination when inspecting large, massive and strongly scattering components.



Cylinder head: surface with scatter radiation (left) and surface with ScatterFix 2.0 (right).

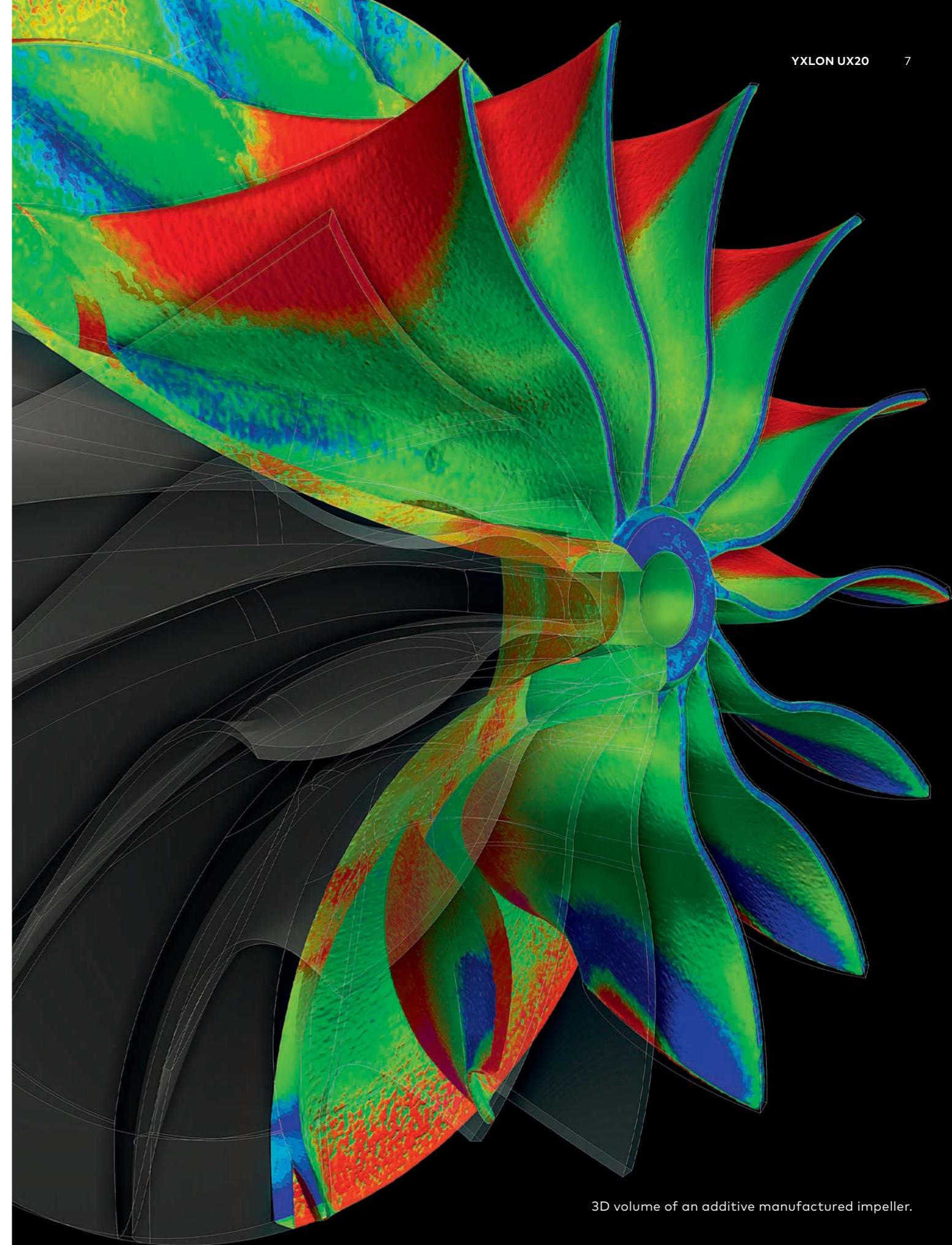
Higher resolution. Low maintenance. MesoFocus.

New technologies like additive manufacturing and the miniaturization of parts ask for highest resolution. With its three selectable focal spots for optimum spatial resolution on the one hand and the robust design of a sealed tube on the other, the optional MesoFocus tube is the perfect fit for rough environments – and can be handled successfully even by inexperienced operators.

The MesoFocus technology combines the benefits of the conventional minifocus and the open microfocus tubes, and strikes the right balance between the demand of higher resolution and the easy maintenance of a sealed tube.

Serving a wide variety of applications

- Automotive and aerospace castings
- Composites
- Electromechanical parts
- Weldings
- Additive manufactured (AM) parts with small defects, like flaws



3D volume of an additive manufactured impeller.

Service Engine 4.0: Taking customer care to the next level.

First-class technical problem solving combined with high economic efficiency – that’s what we call Service Engine 4.0. It drives our service, processes and partners to detect and correct failures quickly and reliably by remote access and during on-site visits. Feel free to contact our service centers and partners worldwide by phone, e-mail or via our website.

Your benefits with Service Engine 4.0

- Guaranteed operational safety
- Maximized system availability
- Minimized repair times
- Full cost control of life-cycle costs
- Extended product lifetime
- Maintaining the measuring capability of metrology systems [FF20/35 CT Metrology]

Our module-based approach with performance and feature upgrades enables you to adapt to future requirements and safeguard your initial investment by extending the product lifetime. Service Engine 4.0 does not only provide fast support now, but is predictive of your future needs.

The Yxlon Lifecycle Services

Academy – full performance from day one through tailored training solutions

SmartExchange – direct replacement of defective or worn-out components to minimize unscheduled system downtime

SpareParts – 100% compatibility and safety through Yxlon qualified spare parts

WarrantyPass – full cost control through our customizable warranty extension program

ServicePass – predictive maintenance and servicing, tailored to your requirements

SmartPass – maximum system uptime for customers with particularly high demands

LifeCyclePass – all-inclusive concept for full cost control over the entire product lifetime

Support – fully digitalized 1st-line support organized in a worldwide expert network, available remote or on-site

Upgrades – performance increase and new features for your Yxlon system portfolio

The UX20 in numbers.

Cabinet	160 kV	225 kV
Width	2,550 mm	
Depth ¹⁾	1,870 mm	
Height	2,365 mm (2,145 mm transport)	
Weight	4,300 kg	5,300 kg
Mains connection	230 V ±10%, 50/60 Hz, 1N PE	
Power consumption, maximum	3.8 kVA	
Dose rate, maximum ²⁾	1 µSv/h	

¹⁾ Cabinet only, add 955 mm for operator console ²⁾ At 100 mm distance from the cabinet surface

Manipulator

Maximum part weight	100 kg
Tilt angle, oblique ¹⁾	±55 °
Turntable, Ø ²⁾	300 mm
Loading door clearance, width x height	840 x 1,625 mm

¹⁾ Maximum angle on detector Y.Panel 4343DXi ²⁾ Optional 600 mm t-slot turntable

Inspection envelope & X-ray detector	Y.Panel 2323HB	Y.Panel 4343DXi
Active area	230 x 230 mm	430 x 430 mm
Pixel pitch	179 µm	139 µm
Focus-detector distance (FDD)	900 mm	1,150 mm
Part size, maximum	Ø 710 x 1,090 mm height	Ø 830 x 1,100 mm height
Inspection envelope 2D	Ø 710 x 1,090 mm height	Ø 800 x 1,100 mm height
Inspection envelope basic CT	Ø 190 x 165 mm height	Ø 340 x 280 mm height
Inspection envelope extended CT ¹⁾²⁾	Ø 315 x 1,085 mm height	Ø 540 x 1,100 mm height

¹⁾ Requires professional analysis PC ²⁾ Artefacts between horizontal scans of a few mm are normal

X-ray source	Y.TU160-D06	Y.TU160-D04	Y.TU225-D04	Y.TU225-M01
Energy, maximum	160 kV	160 kV	225 kV	225 kV
Power, maximum	800/1,800 W	640/640 W	800/1,800 W	50/130/200 W
Focal spot size	0.4/1 mm ¹⁾	1/1 mm ¹⁾	0.4/1 mm ¹⁾	50/130/200 µm ²⁾

¹⁾ According to EN12543 ²⁾ According to ASTM E1165-12

Worldwide offices.

Germany – Headquarters

YXLON International GmbH
Essener Bogen 15
22419 Hamburg
Germany
T. +49 40 527290
E-mail: yxlon@hbg.yxlon.com
www.yxlon.de

USA

YXLON Sales & Service Location
c/o Comet Technologies USA, Inc.
5675 Hudson Industrial Parkway
Hudson, OH 44236
USA
T. +1 234 284 7849
E-mail: yxlon@yxlon.com
www.yxlon.com

China

YXLON Sales & Service Location
c/o Comet Mechanical Equipment
(Shanghai) Co., Ltd
Block B, 1F No.2, Lane 777
West Guangzhong Road,
Jingan District
200072 Shanghai, PRC
China
+86 21 38720918/992
www.yxlon.com.cn

Japan

YXLON Sales & Service Location
c/o Comet Technologies Japan K.K.
New Stage Yokohama Bldg.
1st Floor
1-1-32 Shinurashima-cho
Kanagawa-ku
221-0031 Yokohama
Japan
T. +81 45 4501730
www.yxlon.jp

Taiwan

YXLON Sales & Service Location
c/o Comet Technologies Taiwan Ltd.
1st Floor, No120, Guangming Rd.
Shangshan Village, Qionglin Township
Hsinchu County 307
Taiwan (R.O.C.)
T. +886 35922398

YXLON

YXLON International reserves the right to make changes in specifications and/or to discontinue any product at any time without notice or obligation and will not be liable for any consequences resulting from the use of this publication.