

Led by experience. Driven by curiosity.

Accessories Catalog

EVO & ECO portable X-ray systems

c•met
x-ray

Smart accessories

In our world, time is everything. The smarter we help you and your people work, the faster and better you'll get the job done. Working smart means accuracy, safety and reliability, and most important, it means avoiding costly disruptions to your workflow.

A broad range of high-quality accessories is available for the EVO and ECO series. These various accessories enable a smarter workflow and support multiple applications in all environments.

Our range of accessories makes the use of portable X-ray equipment safer, more efficient and convenient when challenging working conditions has to be solved.

The accessories are not only designed to be used in rough conditions but also to be agile and user-friendly for customers when using portable X-ray systems.

Table of contents

Tube stands	4
Coolers	7
Flight cases	8
Cables	10
Lamps	12
Miscellaneous	14

Tube stands

4-legged tube stand

Comet offers an agile tube stand solution for all portable directional tube heads, based on a 4-legged stand combined with a cradle for the tube head.

Our 4-legged tube stand makes positioning and manipulation of our portable X-ray systems easy. Once you have mounted the X-ray tube head in the tube stand, you can inspect elements from all angles, making exposures more accurate and less time-consuming.

The 4-legged tube stand is the most flexible and versatile solution on the market. It adds high value to any portable X-ray fleet, maximizing your investment and optimizing your workflow.

Positioning

The 4-legged tube stand features individual stepless adjustment of each leg, 360° rotation around two axes and indication of position on both axes.

Easy mounting

All Comet directional X-ray systems, except the EVO 300D/1200, can be mounted on the 4-legged tube stand and the twist-lock handles makes mounting easy.

Robust & safe

The 4-legged tube stand is made of a combination of aluminum and stainless steel making it a robust, safe and long-lasting solution.

Specifications

Weight	15 kg
Max load	40 kg
Min height focal spot - floor	53 cm
Max height focal spot - floor	156 cm





3-legged tube stand

Comet offers an agile tube stand solution for all portable directional tube heads, based on a tripod combined with a cradle for the tube head. Our 3-legged tube stand makes positioning and manipulation of our portable X-ray systems easy when working with hard-to-reach applications. Once you have mounted the X-ray tube head in the tube stand, you can inspect elements from different angles at heights well above floor level, making exposures more accurate and less time-consuming.

The 3-legged tube stand is one of the most flexible and versatile solutions on the market. It adds high value to any portable X-ray fleet, maximizing your investment and optimizing your workflow.

Positioning

The 3-legged tube stand features individual adjustment of each leg, 360° rotation around two axes and indication of position on both axes.

Easy mounting

All Comet directional X-ray systems, except the EVO 300D/1200, can be mounted on the 3-legged tube stand and the twist-lock handles makes mounting easy.

Robust & safe

The 3-legged tube stand is made of a combination of aluminum and stainless steel making it a robust, safe and long-lasting solution.

Specifications

Weight	19 kg
Max load	35 kg
Min height focal spot - floor	118 cm
Max height focal spot - floor	183 cm

Light-weight tube stand

Comet offers a light-weight tube stand solution that meets the demands of most inspection jobs. Our light-weight tube stand makes positioning and manipulation of our portable X-ray systems easy. Once you have mounted the X-ray tube head in the tube stand, you can inspect elements from different angles, making exposures more accurate and less time-consuming. The light-weight tube stand is one of four tube stands that Comet offers.

Positioning

The light-weight tube stand features individual stepless adjustment of each leg and 360° rotation around the tube heads axes.

Easy mounting

All Comet directional and panoramic X-ray systems can be mounted on the light-weight tube stand and the twist-lock handles makes mounting easy.

Robust & safe

The light-weight tube stand is made of steel making it a robust, safe and long-lasting solution.

Specifications

Max load	47 kg
Min height focal spot - floor	55 cm
Max height focal spot - floor	109 cm



Mobile tube stand

Comet offers a specialized mobile tube stand solution which increases your work rate. Our mobile tube stand makes positioning and manipulation of our portable X-ray systems easy. Once you have mounted the X-ray tube head in the tube stand, you can inspect elements from different angles, and the wheels make repositioning very fast, making exposures more accurate and less time-consuming.

The mobile tube stand enables a fixed working position of the tube head, and the wheels enable fast repositioning on plane surfaces.

Positioning

The mobile tube stand features individual stepless adjustment of each leg and 360° rotation around the tube heads axes.

Easy mounting

All Comet directional X-ray systems, except the EVO 300D/1200, can be mounted on the mobile tube stand and the twist-lock handles makes mounting easy.

Robust & safe

The mobile tube stand is made of steel making it a robust, safe and long-lasting solution.

Specifications

Max load	35 kg
Min height focal spot - floor	47 cm
Max height focal spot - floor	85 cm



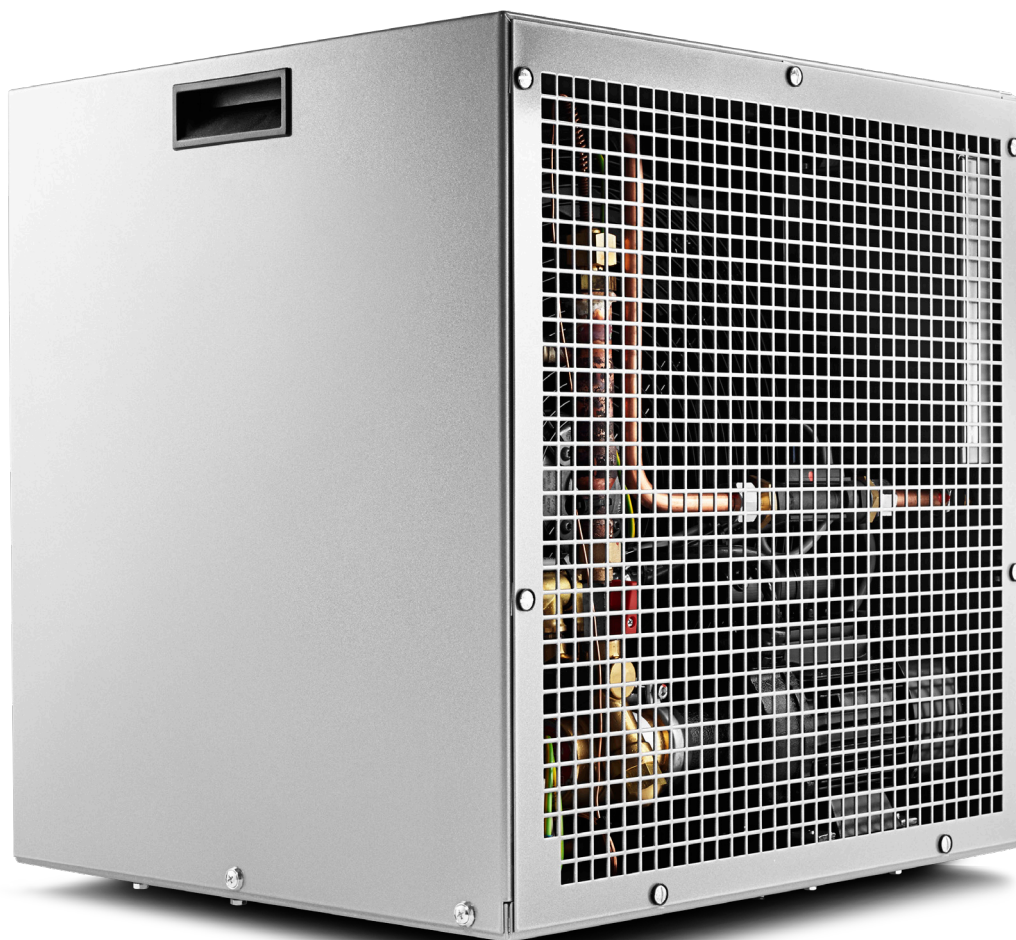
Coolers

XRC 3023 WA EVO Compatible

Comet offers a reliable XRC 3023 WA water cooling unit with a cooling capacity of 3000 W.

When operating X-ray equipment during 24/7 conditions or in extreme ambient temperatures, an efficient cooler is not only of key importance for securing a stable operational performance but also to ensure an efficient protection of the X-ray equipment.

XRC 3023 WA water cooling unit, with a cooling capacity of 3000 W, that can connect the flow and temperature switch to the EVO water-cooled system, in order to perform a safe and automatic shut-down of the X-ray.



Flight cases

Flight case for tube heads

Robust flight case for safe and easy transportation of the EVO and ECO tube heads. The flight case accommodates the complete EVO and ECO series, and it makes transportation of the portable X-ray tube head safe and easy.

Easy transportation

The foam inserts keep the tube head safely in place during transportation. The wheels, handles, and trolley feature make the flight case easy to transport and handle.

Robust & safe

The flight case is made of a combination of a hard outer shell and industrial foam. It is a robust, safe, and long-lasting solution. The combination of the lid/lock system and the outer shell makes it weather-resistant.

Specifications

Outer dimensions	87 x 50 x 40 cm
Environmental protection	IP54





Flight case for CONTROL EVO

Robust flight case for safe and easy transportation of the CONTROL EVO unit.

Easy transportation

The foam inserts keeps the CONTROL EVO safely in place during transportation. The wheels, handles and trolley feature make the flight case easy to transport and handle.

Robust & safe

The flight case is made of a combination of a hard outer shell and industrial foam. It is a robust, safe and long-lasting solution. The combination of the lid/lock system and the outer shell makes it weather-resistant.

Specifications

Outer dimensions	59 x 63 x 49 cm
Environmental protection	IP54

Cables

25 or 50 m interconnection cable EVO 225D-300D/1200

The 25 or 50 m extension cable allows the operator to work in a greater distance from the tube head.

Specifications

Connector	Metal - metal
Cable length	25 & 50 m



25 or 50 m extension cable EVO & ECO

The 25 or 50 m extension cable allows the operator to work in a greater distance from the tube head.

Specifications

Connector	Metal - plastic
Cable length	25 & 50 m



Double door contact

Double door contact for CONTROL EVO is based on non-contact magnetic principles and can be used for safe monitoring of doors in X-ray installations.

Specifications

Channels	2 NC, 1 NO
----------	------------

Cables for door lamp

Comet offers cables for interfacing to a customized lamp or door interlock system. The cable have the right connector at one end and open wires at the other end. The CONTROL EVO supports an interface for multicolor warning lights, sirens, a double door interlock system, a flow switch, and control of an external device.

Easy mounting

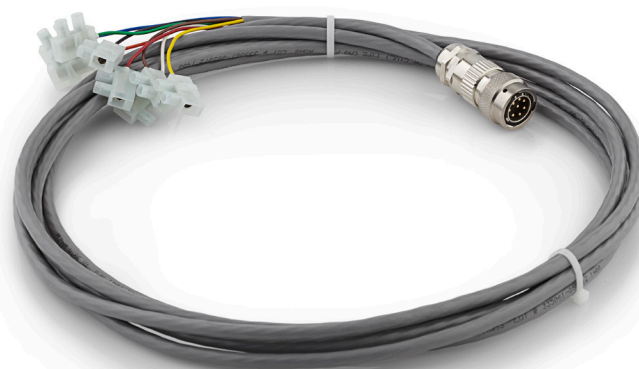
The pre-mounted connectors allows for direct attachment to the CONTROL EVO.

Local configuration

If needed, these cables make the interface with additional lamps and double door interlock systems safe and easy.

Specifications

Number of wires	8
Cable length	5 m



Lamps



Warning lamps

Comet offers a reliable solution, equipped with a 30-meter cable for portable and mobile X-ray systems. Local safety regulations or conditions often require an external warning lamp. The external warning lamp indicates pre-warning or X-ray emission to the inspection crew and the surroundings.

These lamps are offered with red or yellow lights, depending on local requirements. The warning lamp is controlled and supplied by the X-ray control unit.

Easy mounting

A bracket integrated into the lamp makes mounting in a visible position easy.

Local configuration

These lamps are offered with red or yellow lights, depending on local requirements.

Specifications

Lamp color	Red or yellow
Cable length	30 m

Lamp tower with siren

Lamp tower with siren for fixed mounting is equipped with three configurable color modules and a siren, giving an auditory and visible indication of the X-ray status.

Specifications

Lamp color	Green, yellow, and red
Siren	Built-in
Lamp tower	Configurable
Environmental protection	IP65



External lamp, ultra bright

Ultra-bright external warning lamp for fixed mounting on the CONTROL EVO is equipped with a 24 V, 3.6 W LED array, giving a clear and visible indication of the X-ray status.

Specifications

Lamp brightness	Ultra
Lamp color	Red or yellow
Environmental protection	IP65



Miscellaneous

Lead cone package

Minimizing unwanted scatter radiation to the surroundings is often of key importance when keeping the safety area as small as possible.

Workplace efficiency will increase when the X-ray emission is focused through the lead cone, thereby reducing the area that needs to be vacated to one-third, depending on the application and local safety regulations.

The package consists of a lead cone, additional filters, an adaptor flange and a light-weight tube stand. The lead cone is pre-manufactured for 10 x 48 cm films with a 700 mm film focus distance.

Easy mounting

The lock system on the mounting bracket makes the lead cone easy to fasten. The lead cone can be rotated 360° in the mounting bracket.

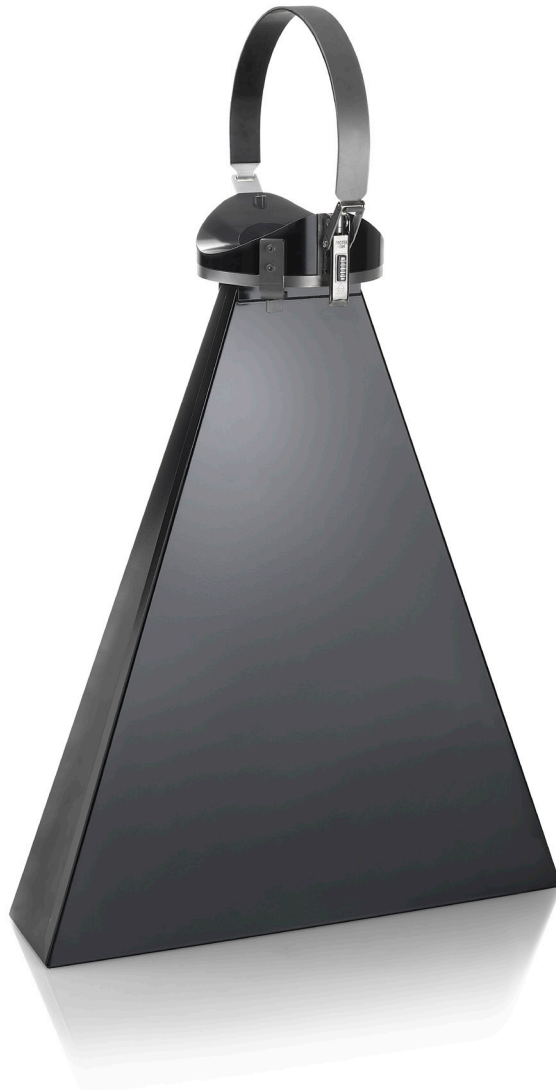
Positioning

The light-weight tube stand, included in the lead cone package, makes positioning easy.

Specifications

Film focus distance	700 mm
Film size	10 x 48 cm
Weight	6 kg

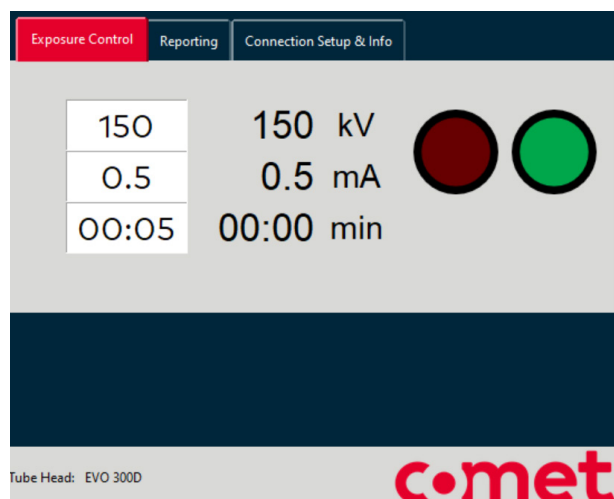
* Only for directional



Aperture unprocessed

Unprocessed aperture disc, which can be processed locally according to the customer's requirements.

See instructions in the EVO & ECO user manual.



Remote interface

PC remote interface including USB-USB cable 2.5 m and manual for remote operation of CONTROL EVO. Functionality includes setting kV, mA and time as well as X-ray ON and OFF.

USB – USB cable, 2.5 m included.

Revolving hand ring

The EVO 225D/1200 hand ring replaces the lid at the cathode end of the tube head. This revolving hand ring allows the user to let the X-ray beam point in any direction when the tube head is resting on a plane surface.

Easy mounting

The position of the tube head is fixed by a spring-loaded lock. A bearing scale indicates the direction of the beam for reporting purposes.

Positioning

The X-ray beam can be rotated 360° around the tube heads axis.



You can find us here

Switzerland (Head Office)

Comet AG Industrial X-ray modules
Herrengasse 10
3175, Flamatt
T +41 31 744 90 00

Denmark

Comet Technologies Denmark A/S
Helgeshøj Alle 38
2630, Taastrup
T +45 72 40 77 00

United States

Comet Technologies USA Inc.
100 Trap Falls Road Extension
Shelton, CT 06484
T +1 203 447 31 65

China

Comet Mechanical Equipment Co. Ltd.
1201 Guiqiao Road
Building 10, 1st Floor
Pudong, Shanghai 201206
T+86 21 6879 9000

Japan

Comet Technologies Japan KK
New Stage Yokohama Bldg., 1st Floor
1-1-32 Shinurashima-cho
Kanagawa-ku
Yokohama, 221-0031
T +81 45 450 1730

South Korea

Comet Technologies Korea Co., Ltd.
Suwon Venture Plaza Bldg, Room 402
48 Samsung-ro, 168 beon-gil,
Yeongtong-gu, Suwon-si
Gyeonggi-do, 16676
T +82 (0)70 4337 1282
T +82 (0)70 4332 1580

Taiwan

Comet Mechanical Equipment Co. Ltd.
1201 Guiqiao Road
Building 10, 1st Floor
Pudong, Shanghai 201206
T +86 21 68799000

Comet Technologies Denmark A/S

Helgeshøj Alle 38, 2630, Taastrup. Denmark.
T +45 72 40 77 00
Web: xray.comet.tech
Mail: info@comet-xray.com

comet
x-ray